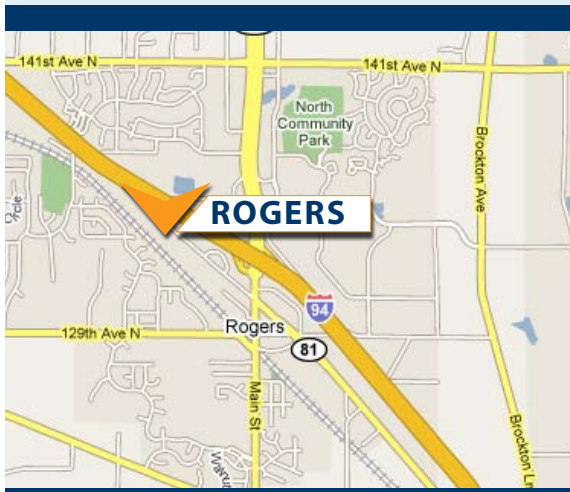


OFFICE/WAREHOUSE SPACE

FOR SUBLEASE

ROGERS PLASTIC CENTER - 22101 INDUSTRIAL BLVD., ROGERS, MN 55374



GREAT BUILDING FOR
SMALL USERS!

PROPERTY DETAILS

- Possible access to rail
- Significant in place electrical
- Shared lunch room
- Great proximity and access to I-94
- Sublease ends January 31, 2010

PROPERTY INFORMATION

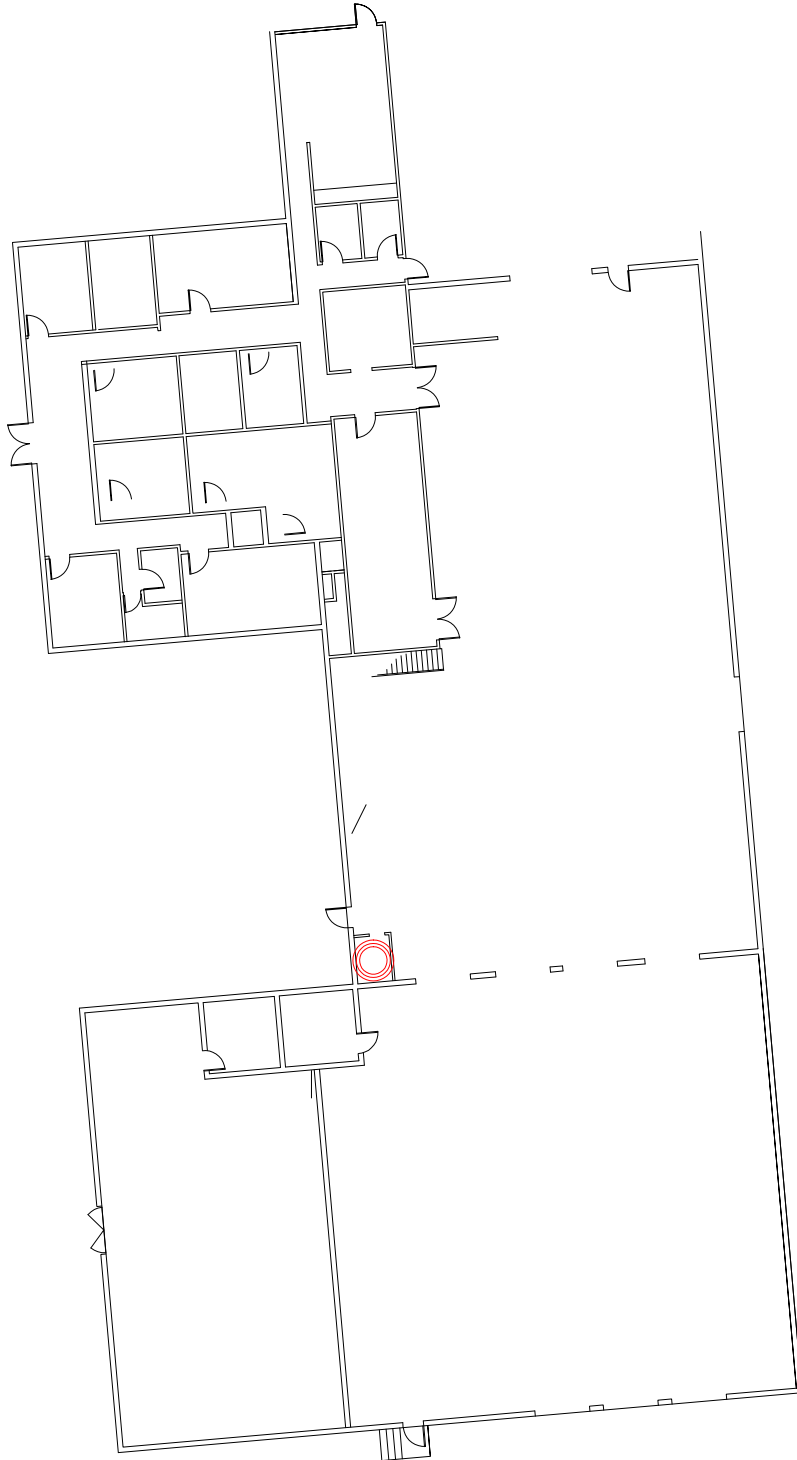
- Building Size – 64,900 SF
- Sublease Size – 14,525 SF
 - Office – 3,225 SF
 - Warehouse – 11,300 SF
- Ceiling Height - 14' clear
- Dock Doors – 3
- Private Offices - 6
- Rates
 - Office – \$7.00
 - Warehouse – \$3.00 PSF


VANTAGE POINT
PARTNERS

contact WAYNE ELAM
direct 763 428 7001
cell 763 229 4982
email welam@vantage-point-partners.com
website www.vantage-point-partners.com



OFFICE / WAREHOUSE SPACE - ROGERS, MN



VANTAGEPOINT
PARTNERS

contact WAYNE ELAM
direct 763 428 7001
cell 763 229 4982
email welam@vantage-point-partners.com
website www.vantage-point-partners.com

The information contained herein was obtained from sources believed to be reliable, but Vantage Point Partners, LLC has not verified nor has any knowledge regarding the accuracy of information and makes no representation or warranty concerning the same. Therefore, Vantage Point Partners, LLC disclaims all liabilities in connection with any inaccuracies or incompleteness.